

4

3

2

1

THIS PRODUCT CONTAINS PROPRIETARY INFORMATION OF OCP GROUP, INC. AND IS SUBJECT TO THE CONDITIONS THAT THE INFORMATION: (A) BE RETAINED IN CONFIDENCE. (B) NOT BE REPRODUCED OR COPIED IN WHOLE OR IN PART. (C) NOT BE USED INCORPORATED IN ANY PRODUCT EXCEPT ON AN EXPRESS WRITTEN AGREEMENT WITH OCP GROUP, INC.

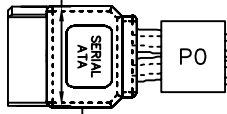
REVISIONS

| DATE | REV | AREA | DESCRIPTION | APP'D |
|-------|-----|------|-----------------|-------|
| 19/09 | A | - | INITIAL RELEASE | CJG |

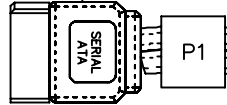


HEAT SHRINK

14.30±0.5

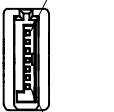


P0



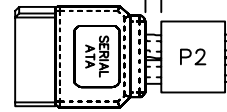
P1

PIN 1

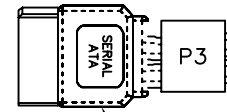


PIN 7

10 REF. (4X)



P2



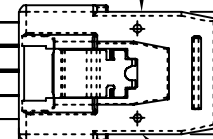
P3

SATA 1X

30 REF.

2 REF.

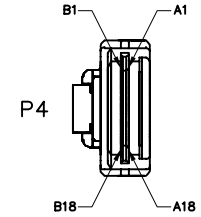
SFF 8087



17.20

28.00

1



P4

TABLE A

| PART NO. | LENGTH |
|--------------|------------|
| 60-00345-002 | .25 Meters |
| 60-00345-01 | .5 Meters |
| 60-00345-003 | 1 Meter |

6.40±0.5



LENGTH

6.95



D

D

C

C

B

B

A

A

| | | | |
|---|--|--|----------------------------|
| 6 | | | UNLESS OTHERWISE SPECIFIED |
| 5 | | | CABLE TOLERANCE |
| 4 | | | |
| 3 | | | LENGTH +/- 3% |
| 2 | | | |
| 1 | | | CONNECTOR TOLERANCE |

| | | | | |
|------|---------------------|-----|--------------|-------------|
| ITEM | DESCRIPTION/REMARKS | QTY | .XXX± LINEAR | .XX± LINEAR |
|------|---------------------|-----|--------------|-------------|

SCALE: FREE DATE: 05/05/09
 UNITS: mm CHK'D: CJG
 DRAWN BY: EFC APP'D: CJG

| | | | |
|--------------------------------|-----------------|-----|-------|
| TITLE: CBL, MINI SAS 4i-4xSATA | | | |
| OCP PART NO.: 60-00345-01 | | | |
| CUSTOMER: TBD | | | |
| SIZE | DRAWING NUMBER: | REV | SHEET |
| A | 60-00345-XXX | A | 1/2 |

4

3

2

1

4

3

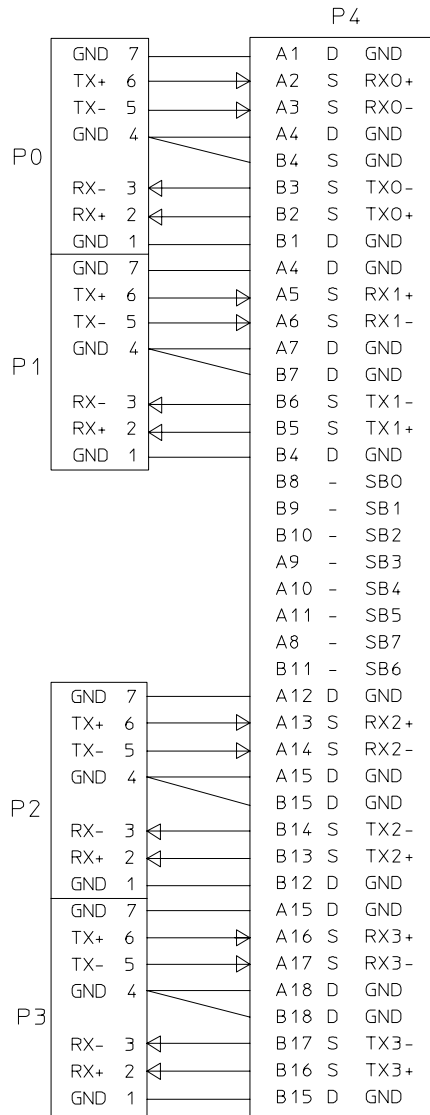
2

1

THIS PRODUCT CONTAINS PROPRIETARY INFORMATION OF OCP GROUP, INC. AND IS SUBJECT TO THE CONDITIONS THAT THE INFORMATION: (A) BE RETAINED IN CONFIDENCE. (B) NOT BE REPRODUCED OR COPIED IN WHOLE OR IN PART. (C) NOT BE USED INCORPORATED IN ANY PRODUCT EXCEPT ON AN EXPRESS WRITTEN AGREEMENT WITH OCP GROUP, INC.

REVISIONS

| DATE | REV | AREA | DESCRIPTION | APP'D |
|-------|-----|------|-----------------|-------|
| 09/08 | A | - | INITIAL RELEASE | APP'D |



NOTES:

1. MATERIAL:

OVER MOLD - POLYBUTYLENE TEREPHTHALATE (PBT), 94-V0,
GLASS FILLED 30%.

LATCH - STAINLESS STEEL ALLOY.

CABLE -

SIGNALS PVC INSULATION

SOLID COPPER SIGNAL AND DRAIN.

INNER DIELECTRIC IS POLYOLEFIN

TWIN-AX SHIELD IS ALUMINIZED POLYESTER FOIL.

PCB - FR4

2. THIS PRODUCT CONFORMS TO THE MECHANICAL
DIMENSIONING AND ELECTRICAL PERFORMANCE
REQUIREMENTS OF SFF-8086 AND SFF-8087.

3. MINIMUM RECOMMENDED BEND RADIUS 28 MM.

4. PIN OUT CONFORMS TO SAS 1.1 9.0D
SECTION 5.2.4.1.3.3 F83

5. PRODUCT IS RoHS COMPLIANT.

| | | |
|---|--|--|
| 6 | | |
| 5 | | |
| 4 | | |
| 3 | | |
| 2 | | |
| 1 | | |

UNLESS OTHERWISE SPECIFIED

CABLE TOLERANCE

LENGTH +/- 3%

CONNECTOR TOLERANCE

.XXX± LINEAR
.XX± LINEAR



TITLE:
CBL, MINI SAS 4i-
4xSATA

OCP PART NO.: 60-00345-XXX

CUSTOMER: TBD

SCALE: FREE DATE: 05/05/09
UNITS: mm CHK'D: CJG
DRAWN BY: LAO APP'D: MJC

| SIZE | DRAWING NUMBER: | REV | SHEET |
|------|-----------------|-----|-------|
| A | 60-00345-XXX | A | 2/2 |

| ITEM | DESCRIPTION/REMARKS | QTY |
|------|---------------------|-----|
|------|---------------------|-----|

4

3

2

1