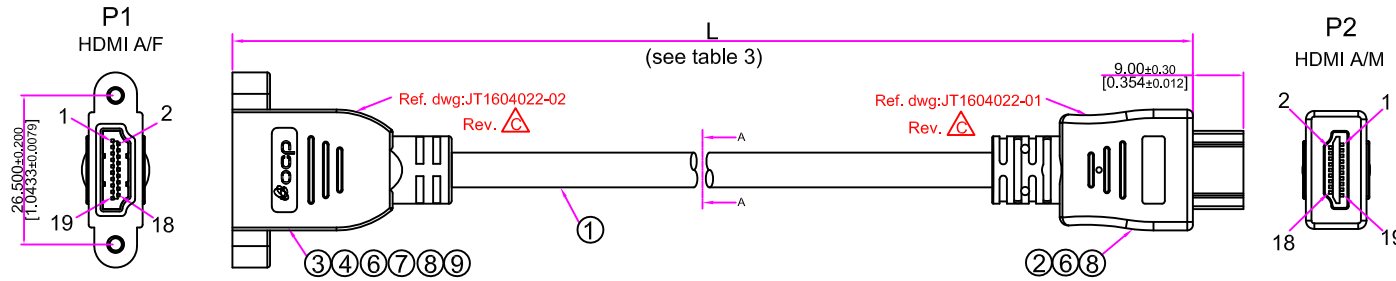
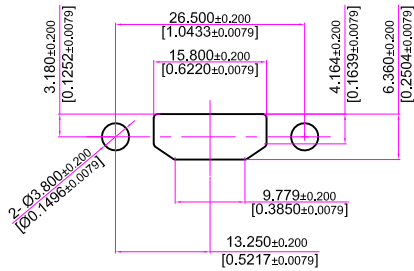


Figure1. Drawing and dimensions



Recommended panel cut-out size: Rev. A  
(Panel thickness : 0.8mm Ref.)



SEC: A-A

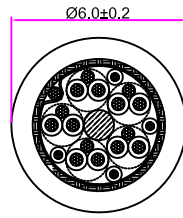


Table 3.

No.	OCP CHINA P/N.	OCP P/N.	L (Length)
1	016-C-0217	61-00195-01	305±10mm [12±0.39", 1FT]
2	016-C-0218	61-00195-02	610±10mm [24±0.39", 2FT]
3	016-C-0219	61-00195-03	915±10mm [36±0.39", 3FT]
4	016-C-0220	61-00195-04	1220±15mm [48±0.59", 4FT]
5	016-C-0221	61-00195-06	1829±20mm [72±0.79", 6FT]

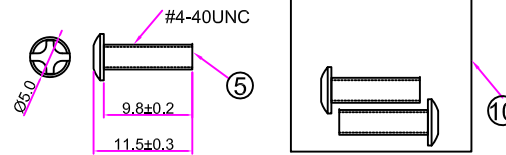
NOTES:

- All materials must conform with RoHS.
- Pulling force between connector overmold and cable: 30kgf min.

Table1. Bill of material

Item	P/N	Description	Quantity
⑩	JD1604006001	PE Bag, 60*40mm	1pc
⑨	CL0052993006	Copper foil	1pc
⑧	BNN450221001	Overmold, PVC 45P, black	~18g
⑦	NB8AD1720001	Plastic Hood, PBT, black	1pc
⑥	NA3MA2022001	Heat shrinkable tube, Ø2.0mm, black	11pcs
⑤	LB1103015101	Screw, #4-40UNC, Ø5.0*11.5mm, nickle plated	2pcs
④	LC2115014101	Hex-nut, #4-40UNC, nickle plated	2pcs
③	D1019F110001	HDMI A-F, 19P, solder type, insulation: black, contact: gold-plate 3u"	1set
②	D1019M110002	HDMI A-M, 19P, solder type, with metal shell, insulation: black, contact: gold-plate 3u"	1set
①	AH1402602701	HDMI 2.0 Cable, 30AWG/5P(7/0.10mmTC)*1P+Drain+AL)+30AWG/4C(7/0.10mmTC)+Fill+AL+Drain+Braid+Jacket: PVC, OD:6.0mm, color:Black	(Ref. table 3)

2pcs per PE Bag

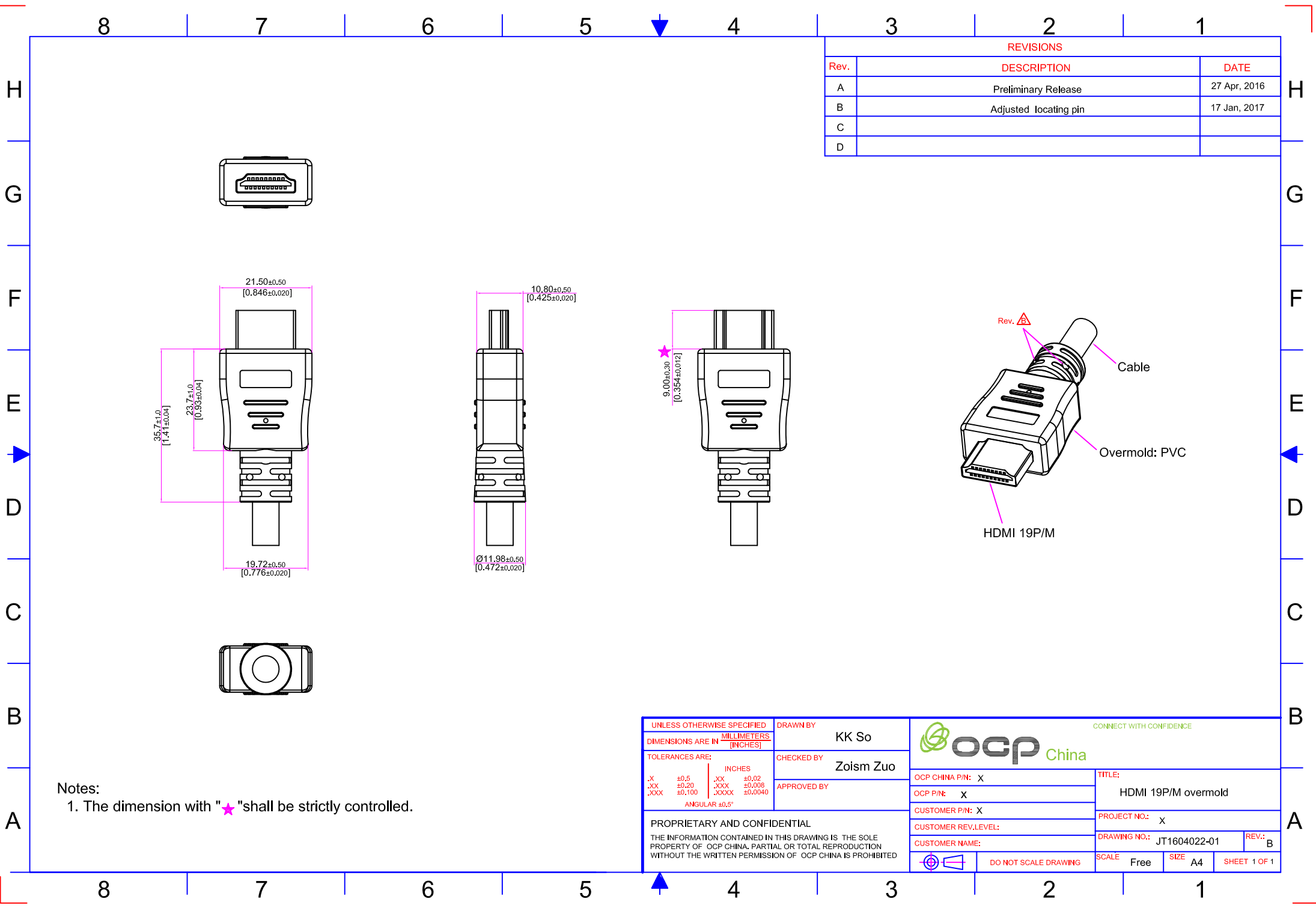


REVISIONS		
Rev.	DESCRIPTION	DATE
A	Preliminary Release	27 Apr, 2016
B	Revise pin assignment & cable from HDMI 1.4 to HDMI 2.0	11 May, 2016
C	Change HDMI A/F assy type to molded type, deleted label, added copper foil & durability test.	17 Jun, 2017

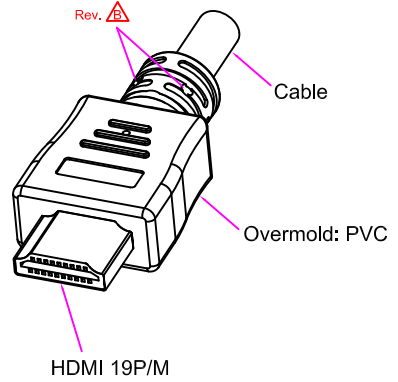
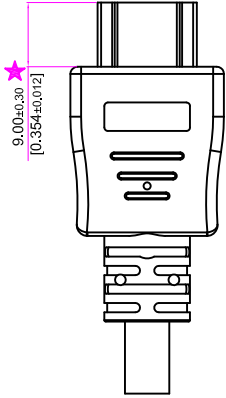
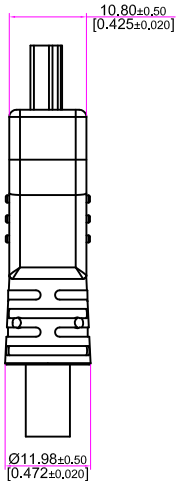
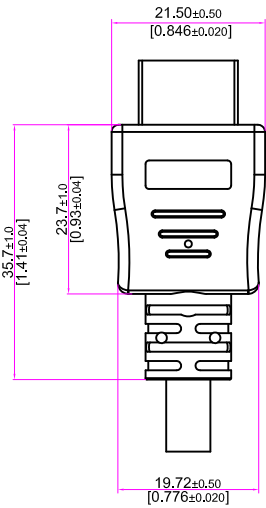
Table 2. PIN ASSIGNMENT:

P1	Wire color	P2
1	White	1
3	Brown	3
2	Drain	2
4	White	4
6	Yellow	6
5	Drain	5
7	White	7
9	Blue	9
8	Drain	8
10	White	10
12	Green	12
11	Drain	11
13	White	13
15	Red	15
14	Drain	14
16	Brown	16
17	Red	17
18	Orange	18
19	Yellow	19
Shell	Shield	Shell



UNLESS OTHERWISE SPECIFIED DIMENSIONS ARE IN MILLIMETERS [INCHES]	DRAWN BY Zoism Zuo	CONNECT WITH CONFIDENCE	
TOLERANCES ARE:	CHECKED BY KK So	OCP China	
.X ±0.5 .XX ±0.20 .XXX ±0.100	INCHES .XX ±0.02 .XXX ±0.008 .XXXX ±0.0040	APPROVED BY O. Acuña	
ANGULAR ±0.5°	PROPRIETARY AND CONFIDENTIAL THE INFORMATION CONTAINED IN THIS DRAWING IS THE SOLE PROPERTY OF OCP CHINA. PARTIAL OR TOTAL REPRODUCTION WITHOUT THE WRITTEN PERMISSION OF OCP CHINA IS PROHIBITED	CUSTOMER P/N: (see table 3)	TITLE: HDMI PANEL MOUTH EXTENSION
		CUSTOMER REV.LEVEL:	PROJECT NO.: PJ1602020
		CUSTOMER NAME:	DRAWING NO.: JT1604022
			REV.: C
		DO NOT SCALE DRAWING	SCALE Free SIZE A4 SHEET 1 OF 1



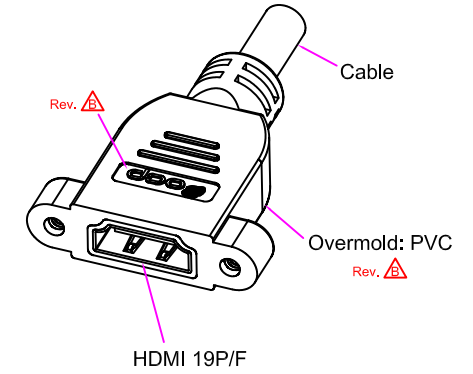
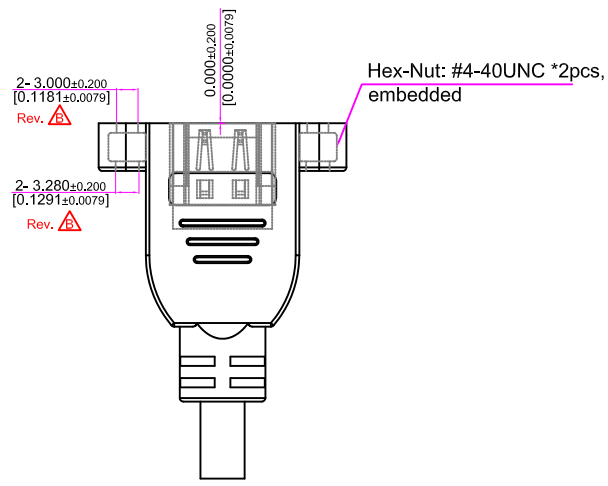
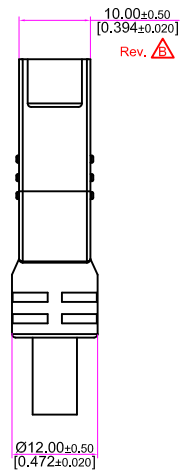
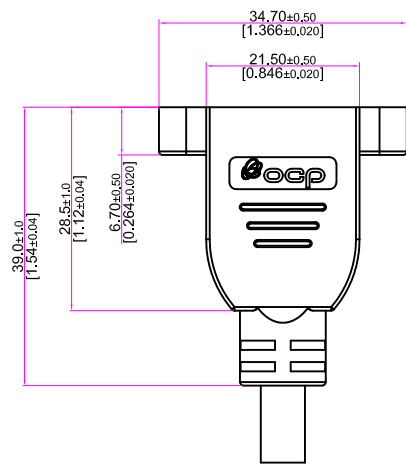
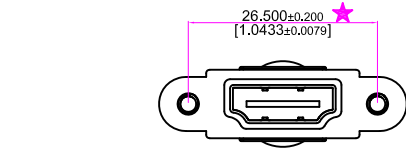
REVISIONS		
Rev.	DESCRIPTION	DATE
A	Preliminary Release	27 Apr, 2016
B	Adjusted locating pin	17 Jan, 2017
C		
D		



Notes:  
 1. The dimension with "★" shall be strictly controlled.

UNLESS OTHERWISE SPECIFIED DIMENSIONS ARE IN <b>MILLIMETERS</b> [INCHES]		DRAWN BY KK So		 CONNECT WITH CONFIDENCE	
TOLERANCES ARE:		CHECKED BY Zoism Zuo			
.X ±0.5	.XX ±0.02	APPROVED BY		OCP CHINA P/N: X	
.XX ±0.20	.XXX ±0.008			CUSTOMER P/N: X	
.XXX ±0.100	.XXXX ±0.0040			CUSTOMER REV.LEVEL:	
ANGULAR ±0.5°				CUSTOMER NAME:	
PROPRIETARY AND CONFIDENTIAL THE INFORMATION CONTAINED IN THIS DRAWING IS THE SOLE PROPERTY OF OCP CHINA. PARTIAL OR TOTAL REPRODUCTION WITHOUT THE WRITTEN PERMISSION OF OCP CHINA IS PROHIBITED.				 DO NOT SCALE DRAWING	
				SCALE	Free
				SIZE	A4
				SHEET	1 OF 1
				TITLE:	HDMI 19P/M overmold
				PROJECT NO.:	X
				DRAWING NO.:	JT1604022-01
				REV.:	B

REVISIONS		
Rev.	DESCRIPTION	DATE
A	Preliminary Release	27 Apr, 2016
B	Change dimension from 9.6mm to 10mm & assy type to molded type, added logo & dimenston.	17 Jan, 2017
C	Added recommended panel cut-out	08 Feb, 2017
D		



Notes:  
1. The dimension with "★" shall be strictly controlled.

UNLESS OTHERWISE SPECIFIED DIMENSIONS ARE IN <u>MILLIMETERS</u> [INCHES]	DRAWN BY KK So		CONNECT WITH CONFIDENCE	
	TOLERANCES ARE:		CHECKED BY Zoism Zuo	OCp CHINA P/N: X
.X ±0.5 .XX ±0.20 .XXX ±0.100	INCHES .XX ±0.02 .XXX ±0.008 .XXXX ±0.0040	APPROVED BY	CUSTOMER P/N: X	PROJECT NO.: X
ANGULAR ±0.5°			CUSTOMER REV.LEVEL:	DRAWING NO.: JT1604022-02
PROPRIETARY AND CONFIDENTIAL THE INFORMATION CONTAINED IN THIS DRAWING IS THE SOLE PROPERTY OF OCP CHINA. PARTIAL OR TOTAL REPRODUCTION WITHOUT THE WRITTEN PERMISSION OF OCP CHINA IS PROHIBITED			CUSTOMER NAME:	REV.: C
			DO NOT SCALE DRAWING	SCALE Free SIZE A4 SHEET 1 OF 1